

Disable IPv6 for Windows Vista, Windows 7 and Windows 2008

First, open a CMD prompt and type the following

- netsh in 6to4 set state disable

Did you know that IPv6 is enabled by default? As I know some might even want to uninstall IPv6, but you won't be able to do it as this is built-in feature. Although IPv6 is developed with better security and aimed to overcome the shortage of IPv4 addresses, but there are several reasons why people still wish to disable this feature:

- Totally not going to use this IPv6 feature as it's not that popular yet and don't know how to use it
- Disabling this IPv6 feature can conserve Windows' CPU and memory resources
- Better network performance with disabled IPv6 feature

Somehow there are still some disadvantages for disabling this IPv6 feature: you will not be able to use Windows Meeting Space or any application that relies on the Windows Peer-to-Peer Networking platform or the Teredo transition technology. If you are not going to be affected by those disadvantages, let's proceed to do it:

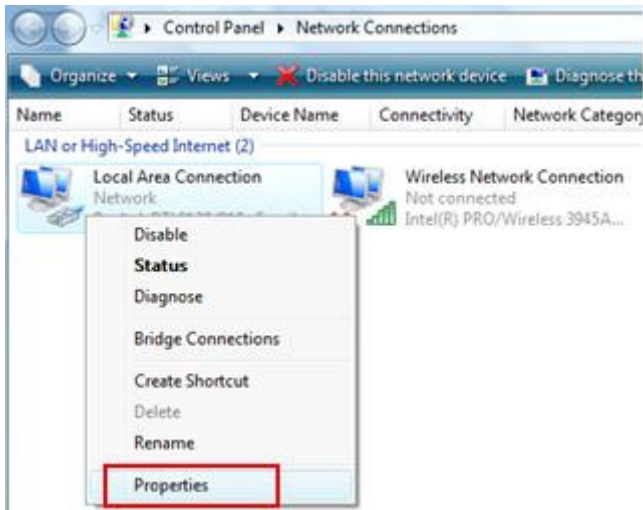
1) Go to **Start** and right click on **Network** and then click **Properties**.

2) Network and Sharing Center window will appear, after that click **Manage network connections**.



Disable IPv6 for Windows Vista, Windows 7 and Windows 2008

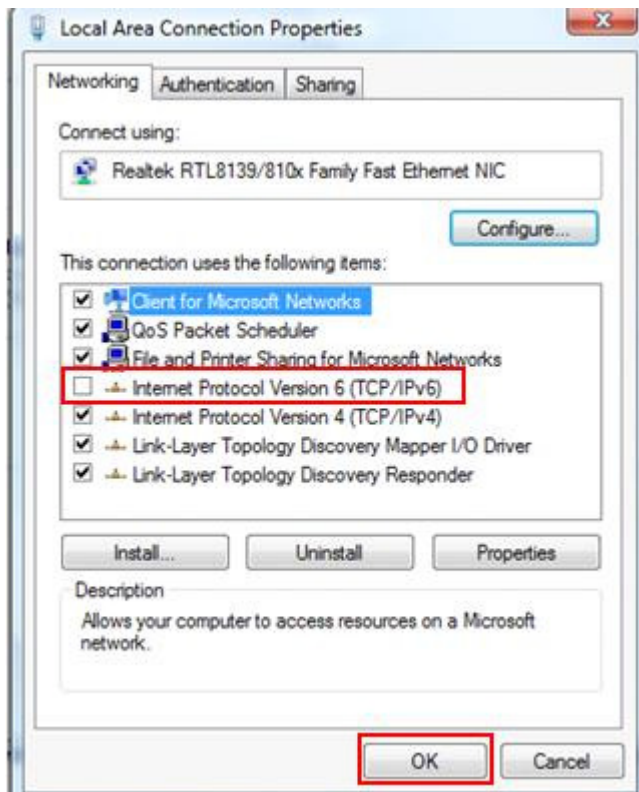
3) Network Connections window will appear. Here you can right click on the network card that you wish to disable IPv6 and click **Properties**.



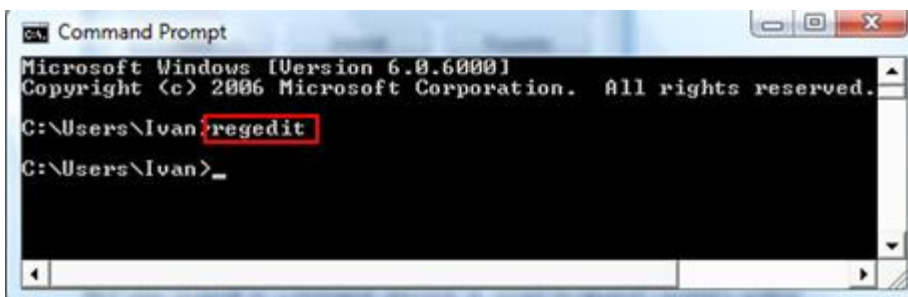
4) In the Local Area Connection Properties window, untick **Internet Protocol Version 6 (TCP/IPv6)** and click **OK**.

Disable IPv6 for Windows Vista, Windows 7 and Windows 2008

Note: This method disables IPv6 on your LAN interfaces and connections, but does not disable IPv6 on tunnel interfaces or the IPv6 loopback interface. You need to make change in Windows registry in order to disable the IPv6 on tunnel interface. You can stop here if don't feel like working with Windows registry. If not, proceed with Step 5.



5) Type **regedit** in command prompt in order to launch registry editor.



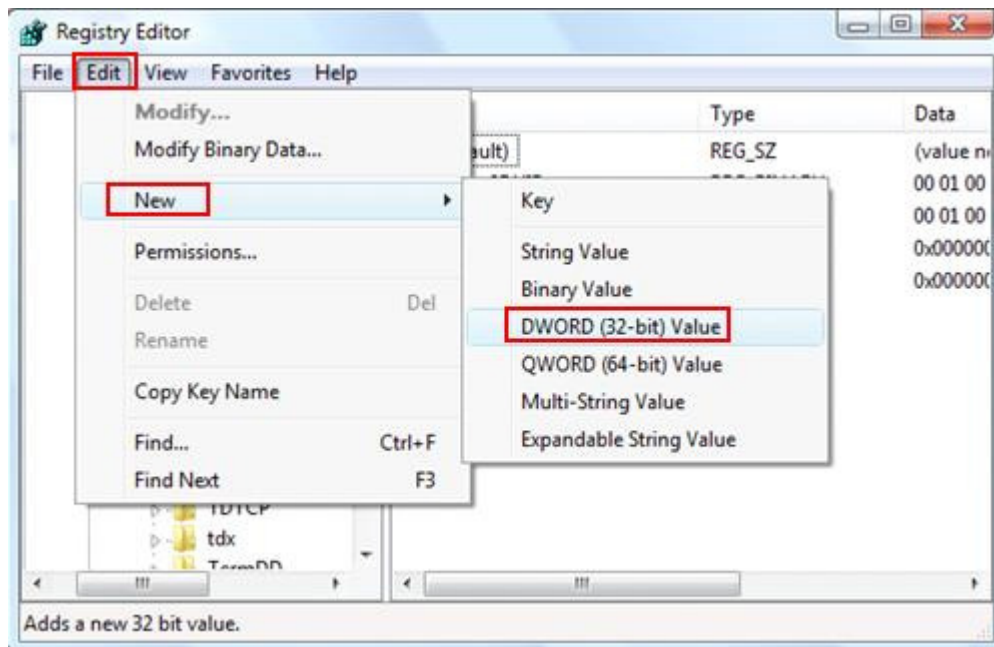
Disable IPv6 for Windows Vista, Windows 7 and Windows 2008

6) Registry editor will appear, proceed to locate following registry item:

HKEY_LOCAL_MACHINE\SYSTEM\CurrentControlSet\Services\Tcpip6\Parameters\DisabledComponents

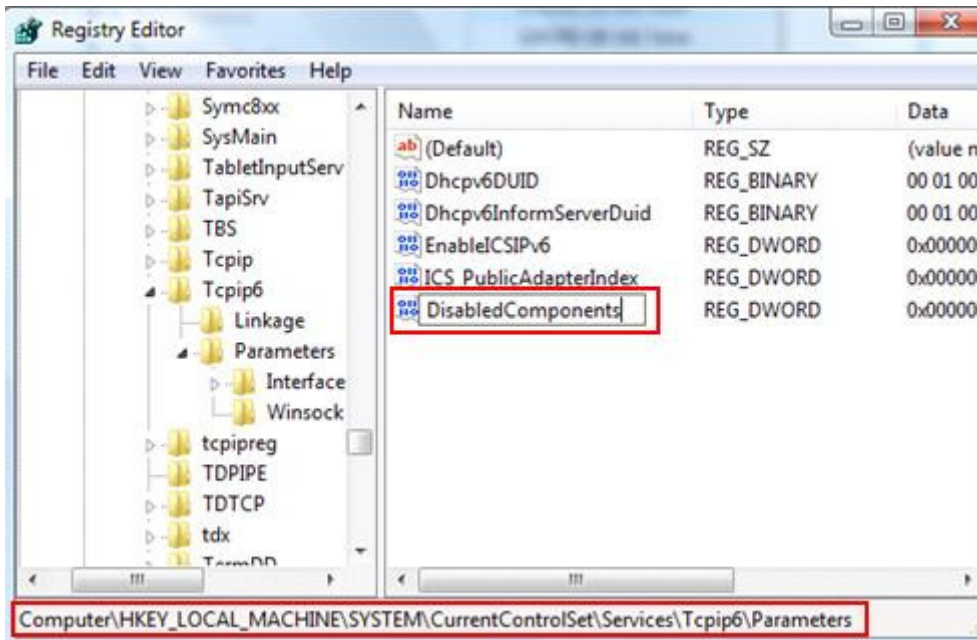
Note: If the DisabledComponents item is unavailable, you must create it:

a) In the **Edit** menu, go to **New**, and then click **DWORD (32-bit) Value**.

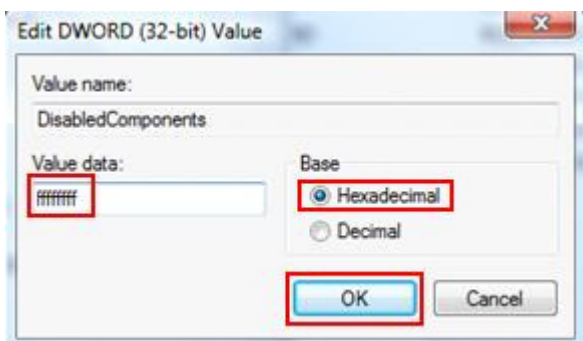


Disable IPv6 for Windows Vista, Windows 7 and Windows 2008

b) Type **DisabledComponents**, and then press **ENTER**.



7) Double-click **DisabledComponents**, set the value as **0xffffffff (hexadecimal value)** (just type `ffffffff`) to disable IPv6 on LAN interfaces, connections, and tunnel interfaces except the IPv6 loopback interface, finally click **OK**.



8) You must restart the computer for this registry value to take effect.